

# Step 1

---

Insert your email

## Aortic Stenosis Quality Score

Introductory questions

\* Required

Email address \*

Your email

Consent \*

By ticking this box, you are consenting that the answers provided by you in completing this questionnaire will be used for research purposes. It will NOT be used in a manner which would allow identification of individual responses.

I consent to my responses being used for research purposes

NEXT

Never submit passwords through Google Forms.

# Step 2

Upper arrow: Click the link for question details and images  
Lower arrow: click for next question

---

## Case 1

Load images: <https://baker.edu.au/research/laboratories/imaging-research/ASQC/ASQC-case01>

What is the grading of this case? \*

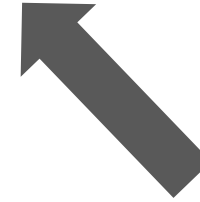
- Mild/no stenosis
- Moderate
- Severe
- Uncertain

What type of AS is this? \*

- Uncomplicated native/prosthetic AS, no other findings
- Low-flow, low-gradient AS with low EF
- Low-flow, low-gradient AS with preserved EF (paradoxical)
- Patient-prosthesis mismatch
- Hyperdynamic circulation (e.g. concurrent aortic regurgitation)
- Uncomplicated native/prosthetic AS with significant pressure recovery

BACK

NEXT



# Step 3

After finishing the questionnaire  
Submit your answers then  
view accuracy

---

## Aortic Stenosis Quality Score

### Submit your answers

Once you have submitted, click on the 'VIEW ACCURACY' button to see your results.

Any incorrect responses will have a link to related teaching materials.

Send me a copy of my responses.

BACK

SUBMIT



## Aortic Stenosis Quality Score

Your response has been recorded.

VIEW ACCURACY



# Step 4

Click on the education material specific to the incorrect answer

✗ What is the grading of this case? \*

Mild/no stenosis ✗

Moderate

Severe

Uncertain

Correct answer

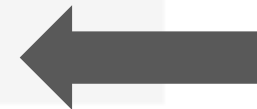
Moderate

Feedback

Open the teaching material for this case

[Intro video \(Watch once only\)](#)

[Teaching specific to case](#)



✓ What type of AS is this? \*

Uncomplicated native/prosthetic AS, no other findings ✓

Low-flow, low-gradient AS with low EF

Low-flow, low-gradient AS with preserved EF (paradoxical)

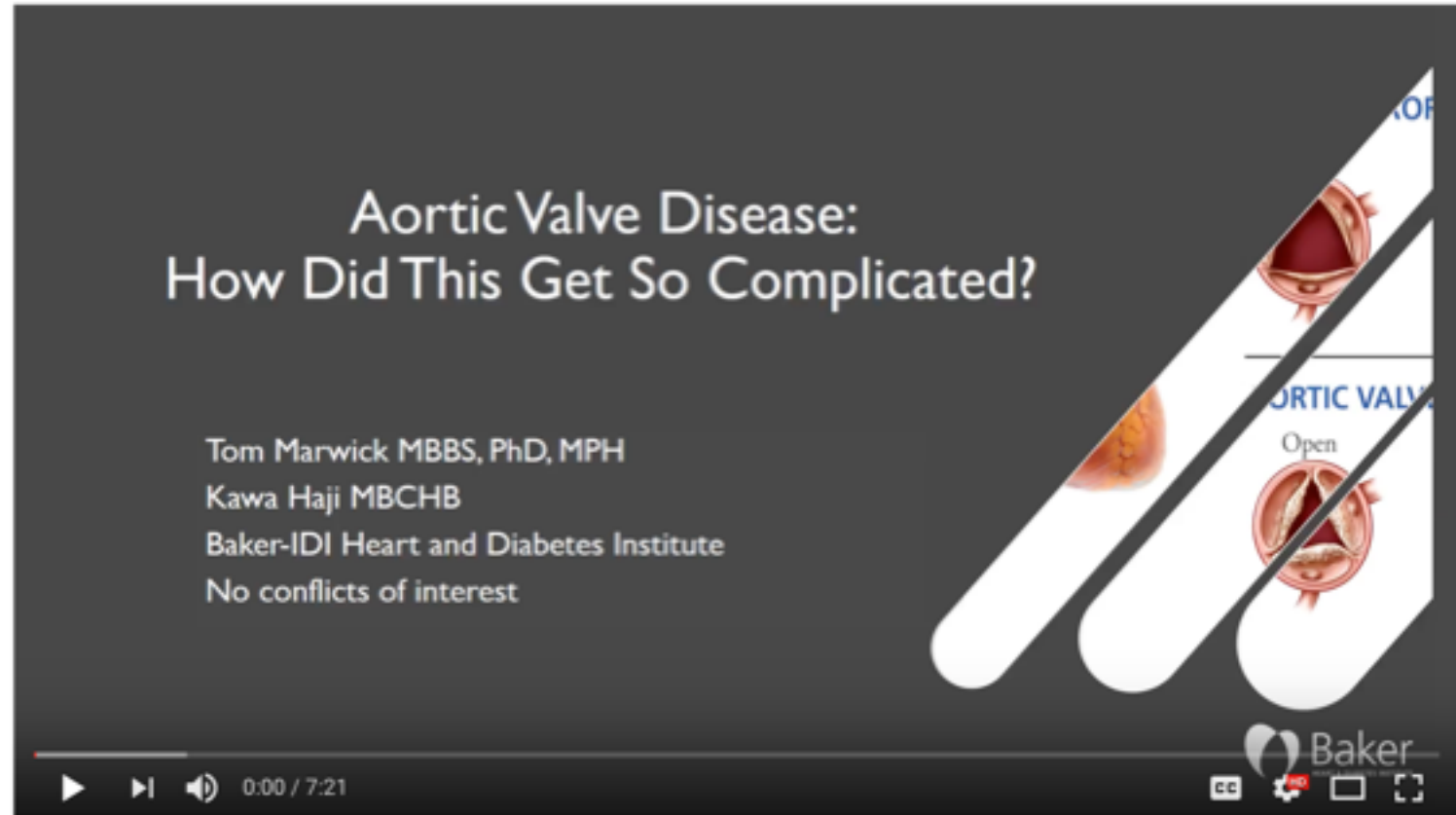
Patient-prosthesis mismatch

Hyperdynamic circulation (e.g. concurrent aortic regurgitation)

Uncomplicated native/prosthetic AS with significant pressure recovery

# Step 5

Watch education material




Aortic Stenosis Quality Control Study | Intro

Unlisted

40 views

Like 0 Dislike 0 SHARE

 **Baker Heart and Diabetes Institute**  
Uploaded on May 7, 2018

**SUBSCRIBE**

Category [Education](#)

License **Standard YouTube License**